

# NAVSTREETS Shapefile Samples

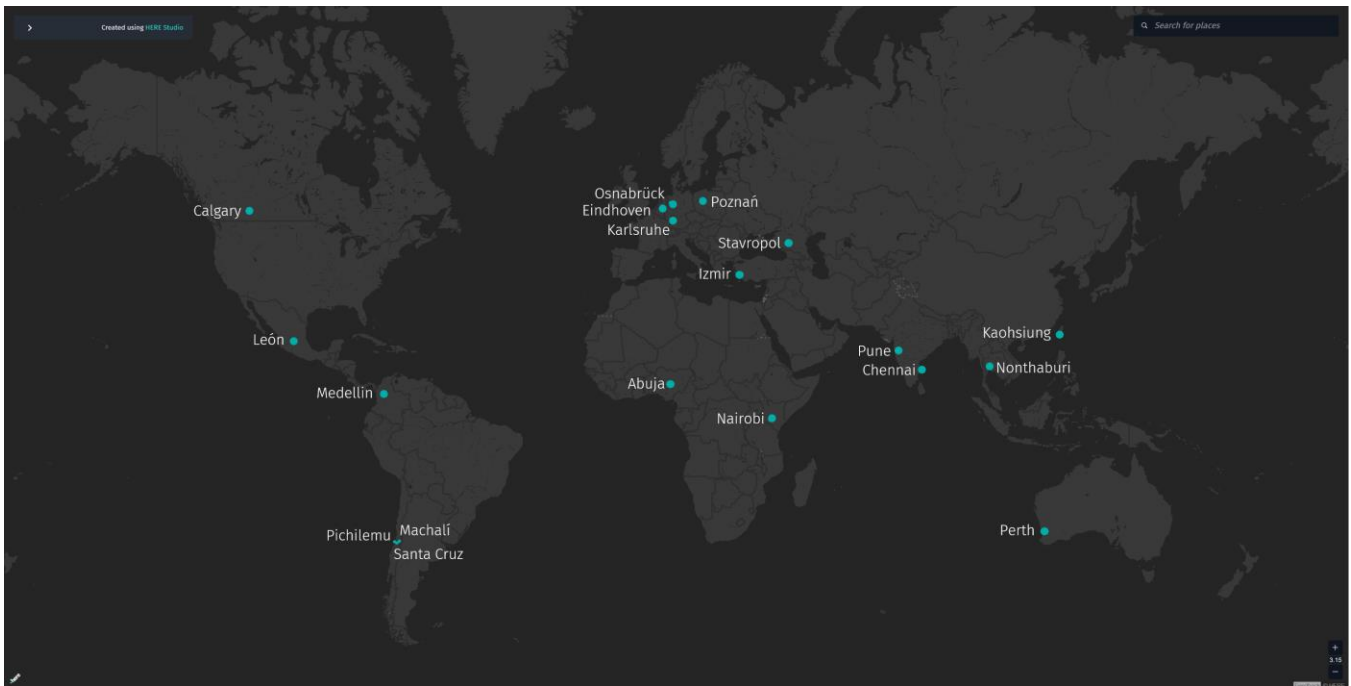
## Product Information

These release notes highlight some general information about **NAVSTREETS Shapefile Samples**.

## Shapefile

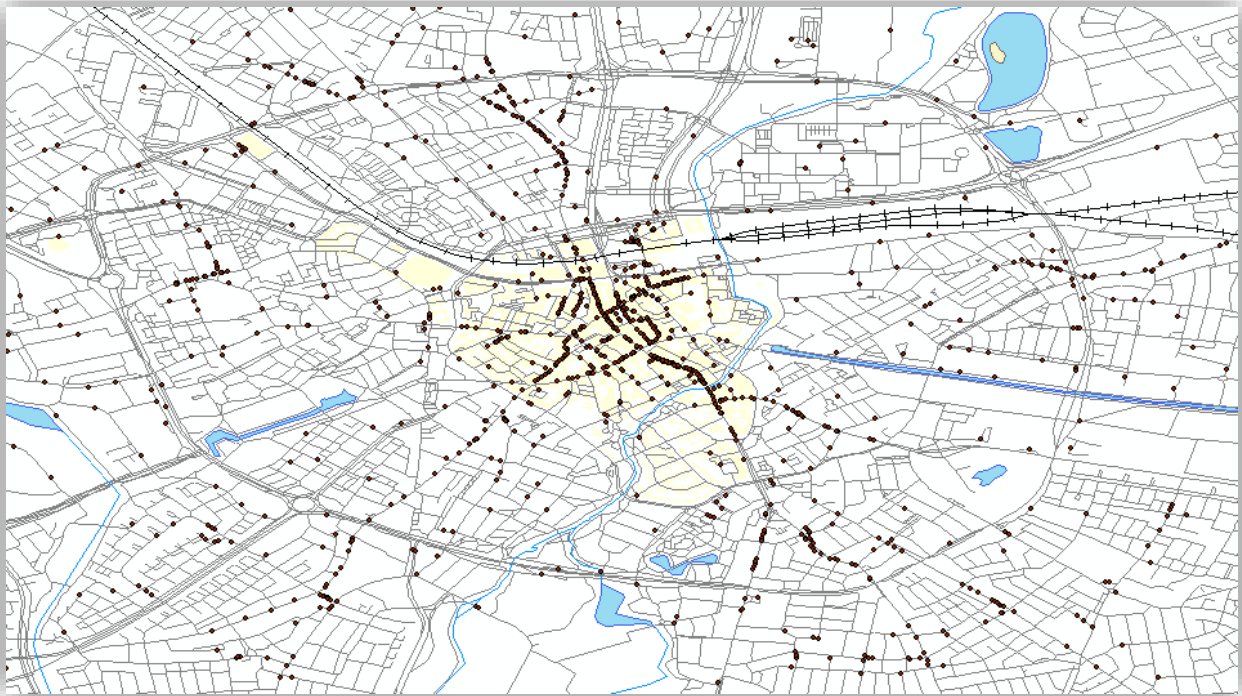
The format is a popular geospatial vector data format for Geographic Information System (GIS) software. It is developed for data interoperability among GIS software products. The shapefile format can spatially describe vector features: points, lines, and polygons, representing, for example, water wells, rivers, and lakes. Each item usually has attributes that describe it.

## Provided Cities



- Australia, Perth
- Canada, Calgary
- Chile, Machalí
- Chile, Pichilemu
- Chile, Santa Cruz
- Colombia, Medellín
- Germany, Karlsruhe
- Germany, Osnabrück
- India, Chennai
- India, Pune
- Kenya, Nairobi
- Mexico, León
- Netherlands, Eindhoven
- Nigeria, Abuja
- Poland, Poznań
- Russia, Stavropol
- Taiwan, Kaohsiung
- Thailand, Nonthaburi
- Turkey, Izmir

### Sample (Eindhoven)

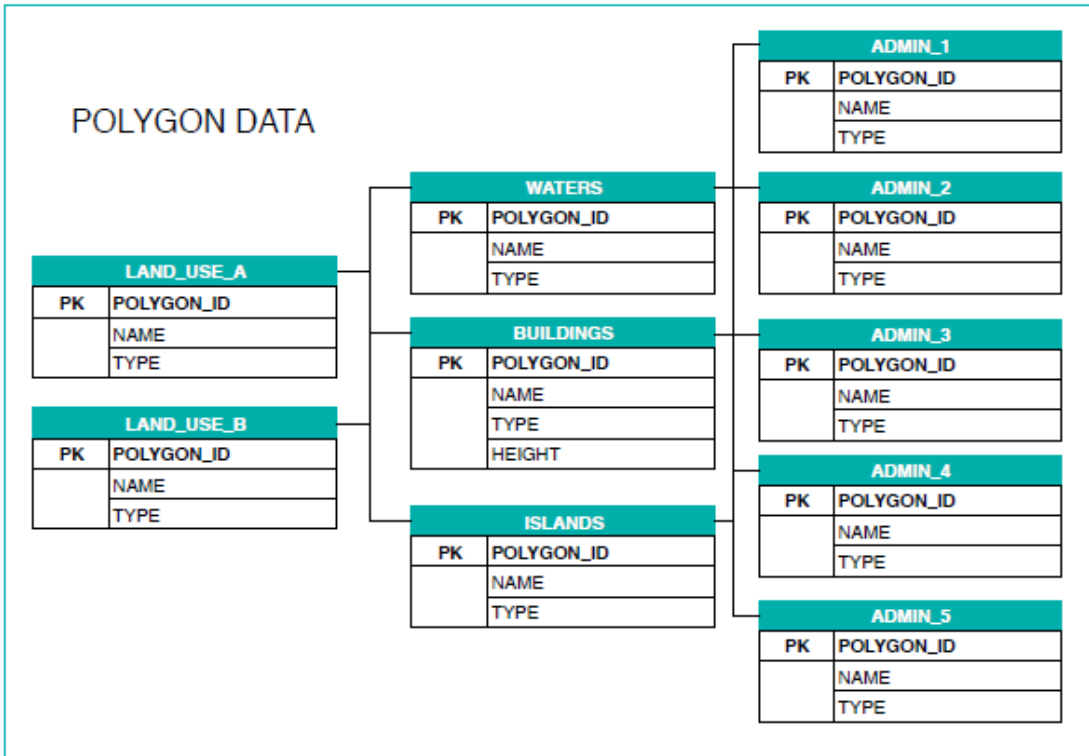
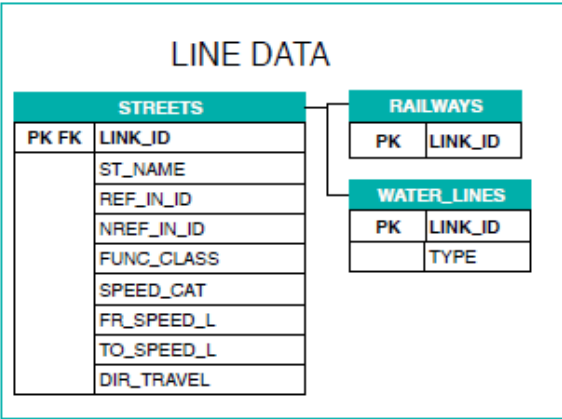
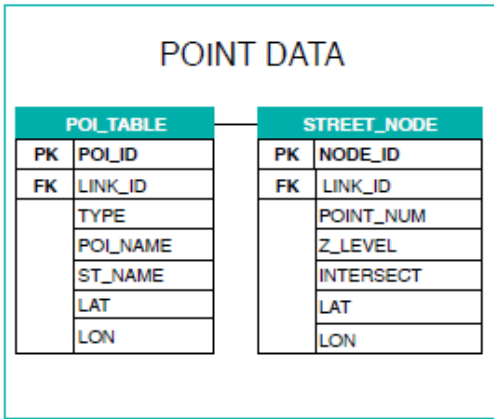


#### Legend

- T2017\_EIN\_POI\_TABLE
- +— T2017\_EIN\_RAILWAYS
- T2017\_EIN\_WATER\_LINES
- T2017\_EIN\_STREETS
- T2017\_EIN\_ISLANDS
- T2017\_EIN\_BUILDINGS
- T2017\_EIN\_WATERS
- T2017\_EIN\_ADMIN\_4

Shapefile schema

**HERE Student Sample Data Shapefile**



Schema Overview  
Version 1.0  
Spatial Data Center of Excellence

## Layer description

Layer name	Description
POI_TABLE	POI_TABLE consist of different types of Points of Interest e.g. Educational Institutions, Restaurants, Shopping, Parkings, Hospitals etc.
STREET_NODE	STREET_NODE - layer needed for routing purposes
STREETS	STREETS – layer which includes information about functional class of a road, speed limits, direction travel
RAILWAYS	Geometry of railways
WATER_LINES	Geometry of water lines
LAND_USE_A	Geometry of land use A
LAND_USE_B	Geometry of land use B
WATERS	Geometry of water
BUILDINGS	Geometry of buildings
ISLANDS	Geometry of islands
ADMIN_1 – ADMIN_5	Administrative boundaries at different levels

## Database Quality

The Quality of the HERE Databases and customer satisfaction are our highest priority. To achieve this objective, we have established a comprehensive and rigorous set of quality checks and product validations. We have achieved ISO 9001 certification and apply ISO/TS 16949 best practices on the continued road to an integrated, company-wide quality management system. HERE strives to continually improve its processes, which helps the company remain the leading world class supplier of enhanced digital map products used for vehicle, consumer, business and governmental applications.

## Legal Obligations and Copyrights

This document is provided to you in confidence, for the sole purpose of providing information about the Release Notes for the provided regions; the data is intended for educational purposes only and may not be distributed. It contains confidential information and may only be used for the purpose mentioned above. Any other use may cause irreparable harm to HERE, for which you may be held responsible.