



Food Group



# Product Specification Guide

[foylefoodgroup.com](http://foylefoodgroup.com)

Experience,  
Quality,  
Superior  
By Nature



Foyle Brands

**DRY  
AGED** *Foyle  
gourmet*



Choice

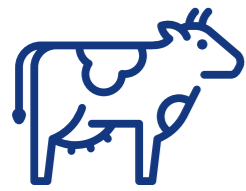
*Redman*  
**LIMOUSIN**

GLENSLIEVE  
**HEREFORD**



*Gourmet*  
BY FOYLE





Leading the way

45+ YEARS  
OF MEAT CRAFT



Global Reach

50+  
COUNTRIES



State of the art

9 SPECIALIST  
FACILITIES



Quality at the core

PROVEN  
FOOD SAFETY AND  
TRACEABILITY



## Quality Beef

With over 45 years of expertise in the beef industry, our business has grown to include 3 divisions throughout the UK and the Republic of Ireland. Foyle employs over 1,400 people across 9 processing plants and supplies the retail sector, the food service sector and the manufacturing industry.

We are continually investing in new machinery, leading the way in both global and domestic markets. This commitment to innovation and improvement ensures that we remain at the forefront of our industry, delivering top-quality products and maintaining our competitive edge worldwide.

*Our Factories, Your Future  
Innovating for Sustainability, Together*



Good food experts

SIGNATURE  
PRODUCT RANGE



Driven by Innovation

AWARD WINNING  
PRODUCTS



Customer Relationships

EXPERTISE YOU  
CAN TRUST

# Contents

## Primal Cuts

Beef Ribeye	08
Cote de Boeuf	09
Tomahawk	10
Beef Striploin	11
Beef Fillet	12
Beef Rump	13
Beef Rump Cap	14
Beef Rump Tail (Fat on) Tri Tip	15
Beef Knuckle	16
Beef Topside	17
Beef Silverside Flat	18
Beef Silverside Eye	19
Beef Brisket	20
Beef Chuck	21
Beef Chuck Tender	22
Beef Chuck Tail Flap	23
Beef Blade (Oyster Blade)	24
Beef LMC (Bolar Blade)	25
Beef Heel	26
Beef Boneless Shin & Shank	27
Beef Bone-in Shin HQ	28
Beef Golden Coin 'A' Muscle (HQ Shin Core Muscle)	29
Beef Golden Coin 'B' Muscle (Heel Core Muscle)	30
Beef Conical 'C' Muscle	31
Beef Golden Coin 'E' Muscle (FQ Shin core muscle )	32
Beef Short Plate	33
Beef Short Rib (Bone-in)	34

Beef Short Rib (Boneless)	35
Beef Rib Finger	36
Beef Intercostal	37
Beef Flank Steak PAD	38
Beef Bavette PAD	39
Beef 5OCL	40
Beef Flank 7O CL	41
Beef 8O CL	42
Beef 9O CL	43
Beef PAD Trim	44
Beef Head Meat	45

## Retail & Catering Packs

Blackmoran Angus	46
The Meat Folk	46
Other Retail Packs	47
Catering Packs	47

## Offal

Beef Body Fat	48
Beef Brisket Fat	49
Beef Tongue	50
Beef Cheek (Square Cut)	51
Beef Thick Skirt	52
Beef Thin Skirt	53
Beef Tail	54
Beef Lips	55
Beef Trachea Ball	56
Beef Lungs	57
Beef Liver	58
Beef Kidney	59

Beef Heart	60
Beef Feet (White)	62
Beef Feet (Burnt)	63
Beef Muzzle (White)	64
Beef Muzzle (Burnt)	65
Beef Flank Membrane	66
Beef Striploin Membrane	67
Beef Skirt Membrane	68
Beef Paddywack	69
Beef Rib Paddywack	70
Beef Neck Paddywack	71
Beef Aorta	72
Beef Achilles Tendon	73
Beef Pizzle	74
Beef Testicle	75
Beef Knee Bone	76
Beef Marrow Bone	77
Beef Trachea	78
Beef Oesophagus	79
Beef Spleen	80
Beef Cartilage	81

## Tripe

Beef Tripe Rumen	82
Beef Tripe Honeycomb	83
Beef Omasum	84
Beef Abomasum	85
Beef Tripe Pieces	86
Beef Omasum Pieces	87
Beef Raw Omasum	88
Beef Mountain Chain Tripe	89

Primal Cuts: Beef Ribeye



# Beef Ribeye

FRESH PRODUCT



PACKAGED PRODUCT



BOXED PRODUCT



Primal Cuts: Cote de Boeuf



# Cote de Boeuf

FRESH PRODUCT



PACKAGED PRODUCT



BOXED PRODUCT





# Tomahawk

FRESH PRODUCT



PACKAGED PRODUCT



BOXED PRODUCT



# Beef Striploin

FRESH PRODUCT



PACKAGED PRODUCT



BOXED PRODUCT



Primal Cuts: Beef Fillet



# Beef Fillet

FRESH PRODUCT



PACKAGED PRODUCT



BOXED PRODUCT



Primal Cuts: Beef Rump



# Beef Rump

FRESH PRODUCT



PACKAGED PRODUCT



BOXED PRODUCT



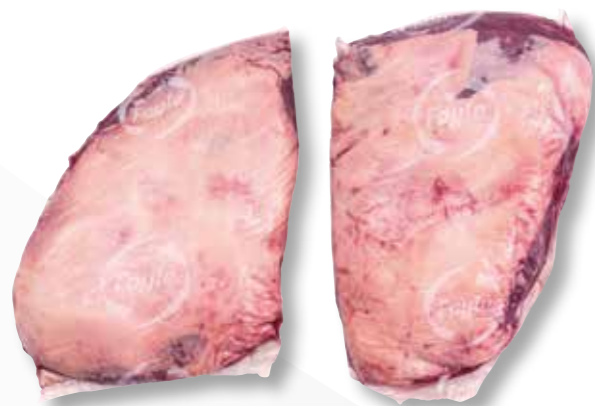


# Beef Rump Cap

FRESH PRODUCT



PACKAGED PRODUCT



BOXED PRODUCT



# Beef Rump Tail (Fat on) Tri Tip

FRESH PRODUCT



PACKAGED PRODUCT



BOXED PRODUCT





# Beef Knuckle

FRESH PRODUCT



PACKAGED PRODUCT



BOXED PRODUCT



# Beef Topside

FRESH PRODUCT



PACKAGED PRODUCT



BOXED PRODUCT





# Beef Silverside Flat

FRESH PRODUCT



PACKAGED PRODUCT



BOXED PRODUCT



# Beef Silverside Eye

FRESH PRODUCT



PACKAGED PRODUCT



BOXED PRODUCT





# Beef Brisket

FRESH PRODUCT



PACKAGED PRODUCT



BOXED PRODUCT



# Beef Chuck

FRESH PRODUCT



PACKAGED PRODUCT



BOXED PRODUCT





# Beef Chuck Tender

FRESH PRODUCT



PACKAGED PRODUCT



BOXED PRODUCT



# Beef Chuck Tail Flap

FRESH PRODUCT



PACKAGED PRODUCT



BOXED PRODUCT





# Beef Blade (Oyster Blade)

FRESH PRODUCT



PACKAGED PRODUCT



BOXED PRODUCT



# Beef LMC (Bolar blade)

FRESH PRODUCT



PACKAGED PRODUCT



BOXED PRODUCT





# Beef Heel

FRESH PRODUCT



PACKAGED PRODUCT



BOXED PRODUCT



# Beef Boneless Shin & Shank

FRESH PRODUCT



PACKAGED PRODUCT



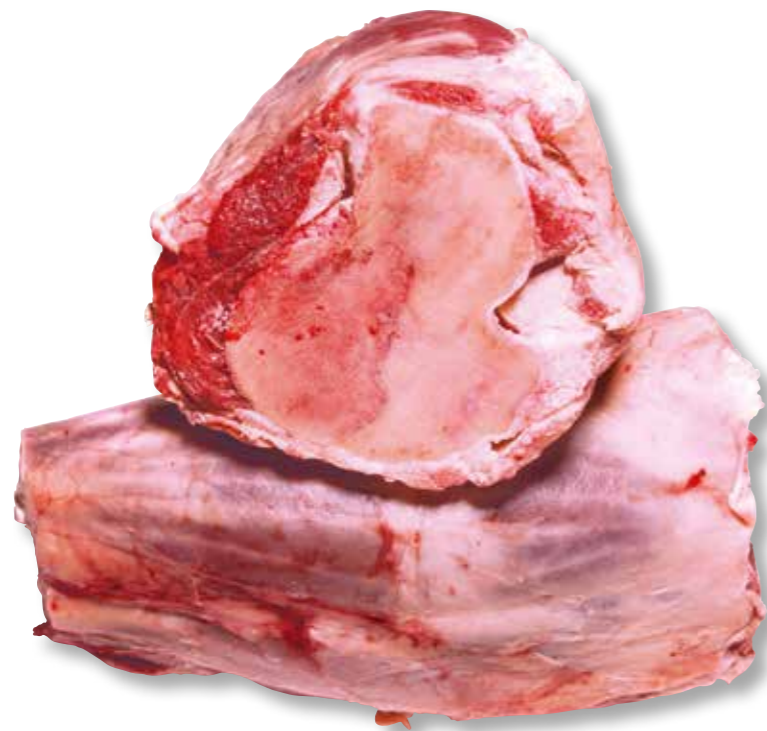
BOXED PRODUCT





# Beef Bone-in Shin HQ

FRESH PRODUCT



BOXED PRODUCT



# Beef Golden Coin 'A' Muscle (HQ Shin Core Muscle)

FRESH PRODUCT



PACKAGED PRODUCT



BOXED PRODUCT





# Beef Golden Coin 'B' Muscle (Heel Core Muscle)

FRESH PRODUCT



PACKAGED PRODUCT



BOXED PRODUCT



# Beef Conical 'C' Muscle

FRESH PRODUCT



PACKAGED PRODUCT



BOXED PRODUCT





# Beef Golden Coin 'E' Muscle (FQ Shin core muscle )

FRESH PRODUCT



PACKAGED PRODUCT



BOXED PRODUCT



# Beef Short Plate

FRESH PRODUCT



PACKAGED PRODUCT



BOXED PRODUCT





# Beef Short Rib (Bone-in)

FRESH PRODUCT



PACKAGED PRODUCT

BOXED PRODUCT



# Beef Short Rib (Boneless)

FRESH PRODUCT



PACKAGED PRODUCT

BOXED PRODUCT





# Beef Rib Finger

FRESH PRODUCT



PACKAGED PRODUCT



BOXED PRODUCT



# Beef Intercostal

FRESH PRODUCT



PACKAGED PRODUCT



BOXED PRODUCT



# Beef Flank Steak PAD

FRESH PRODUCT



PACKAGED PRODUCT



BOXED PRODUCT



# Beef Bavette PAD

FRESH PRODUCT



PACKAGED PRODUCT



BOXED PRODUCT



Trimming: Beef Flank 50/50



# Beef 50CL

FRESH PRODUCT



PACKAGED PRODUCT



BOXED PRODUCT



Trimming: Beef Flank 70/30



# Beef Flank 70CL

FRESH PRODUCT



PACKAGED PRODUCT



BOXED PRODUCT



Primal Cuts: Beef 80/20



# Beef 8OCL

FRESH PRODUCT



PACKAGED PRODUCT



BOXED PRODUCT



Primal Cuts: Beef 90/10



# Beef 9OCL

FRESH PRODUCT



PACKAGED PRODUCT



BOXED PRODUCT





# Beef PAD Trim

FRESH PRODUCT



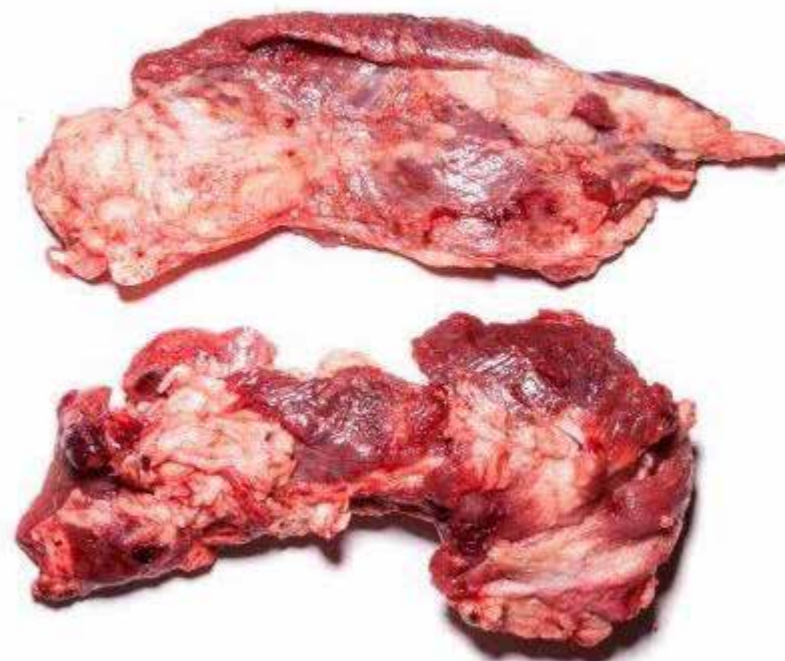
PACKAGED PRODUCT

BOXED PRODUCT



# Beef Head Meat

FRESH PRODUCT



BOXED PRODUCT





# Blackmoran Angus

PACKAGED PRODUCT



# The Meat Folk

PACKAGED PRODUCT



# Other Retail Packs

PACKAGED PRODUCT



# Catering Packs

PACKAGED PRODUCT



Offal: Beef Body Fat



# Beef Body Fat

FRESH PRODUCT



BOXED PRODUCT



Offal: Beef Brisket Fat



# Beef Brisket Fat

FRESH PRODUCT



BOXED PRODUCT





# Beef Tongue

FRESH PRODUCT



BOXED PRODUCT



# Beef Cheek (Square Cut)

FRESH PRODUCT



BOXED PRODUCT





# Beef Thick Skirt

FRESH PRODUCT



BOXED PRODUCT



# Beef Thin Skirt

FRESH PRODUCT



BOXED PRODUCT



Offal: Beef Tail



# Beef Tail

FRESH PRODUCT



BOXED PRODUCT



Offal: Beef Lips



# Beef Lips

FRESH PRODUCT



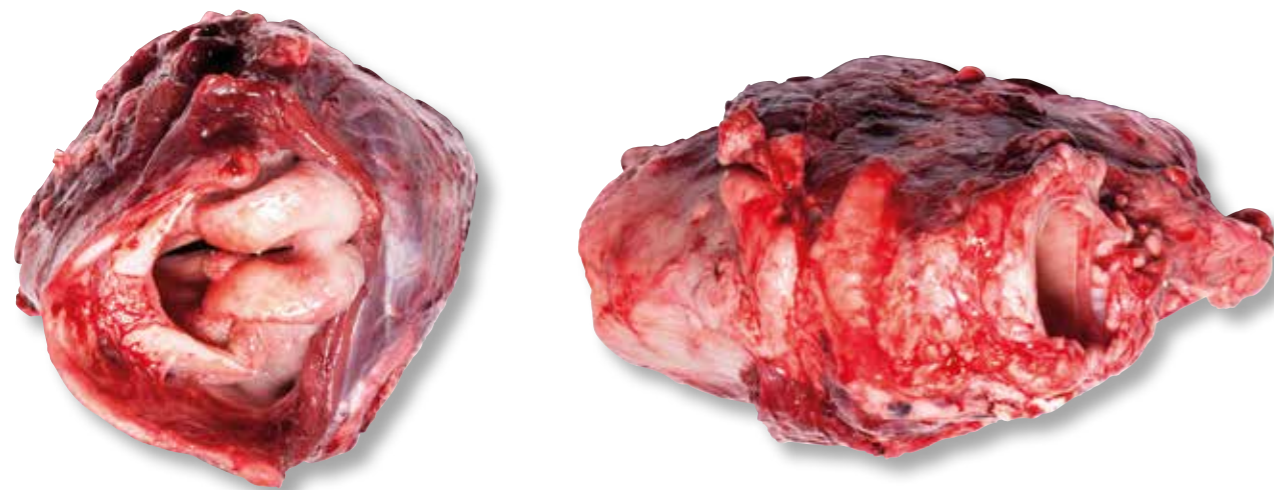
BOXED PRODUCT





# Beef Trachea Ball

FRESH PRODUCT



BOXED PRODUCT



# Beef Lungs

FRESH PRODUCT



BOXED PRODUCT

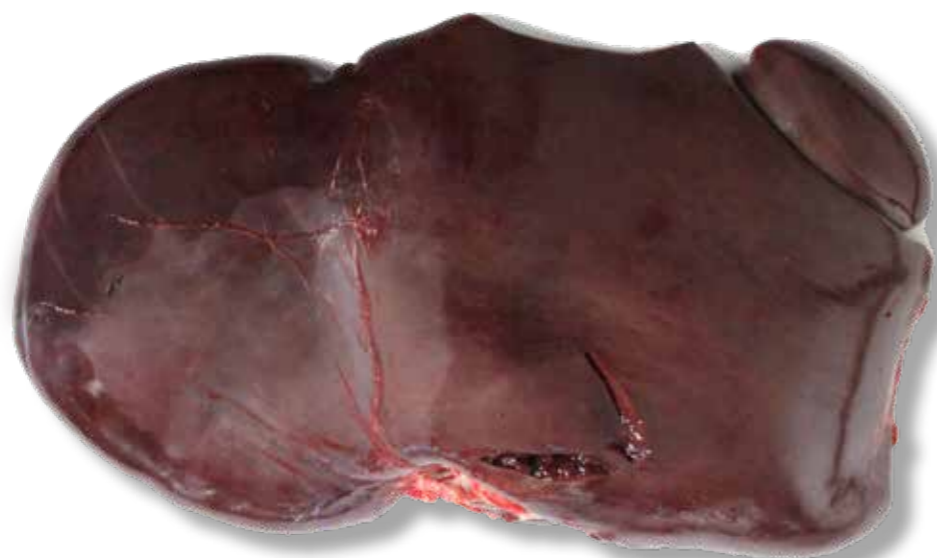


Offal: Beef Liver



# Beef Liver

FRESH PRODUCT



BOXED PRODUCT

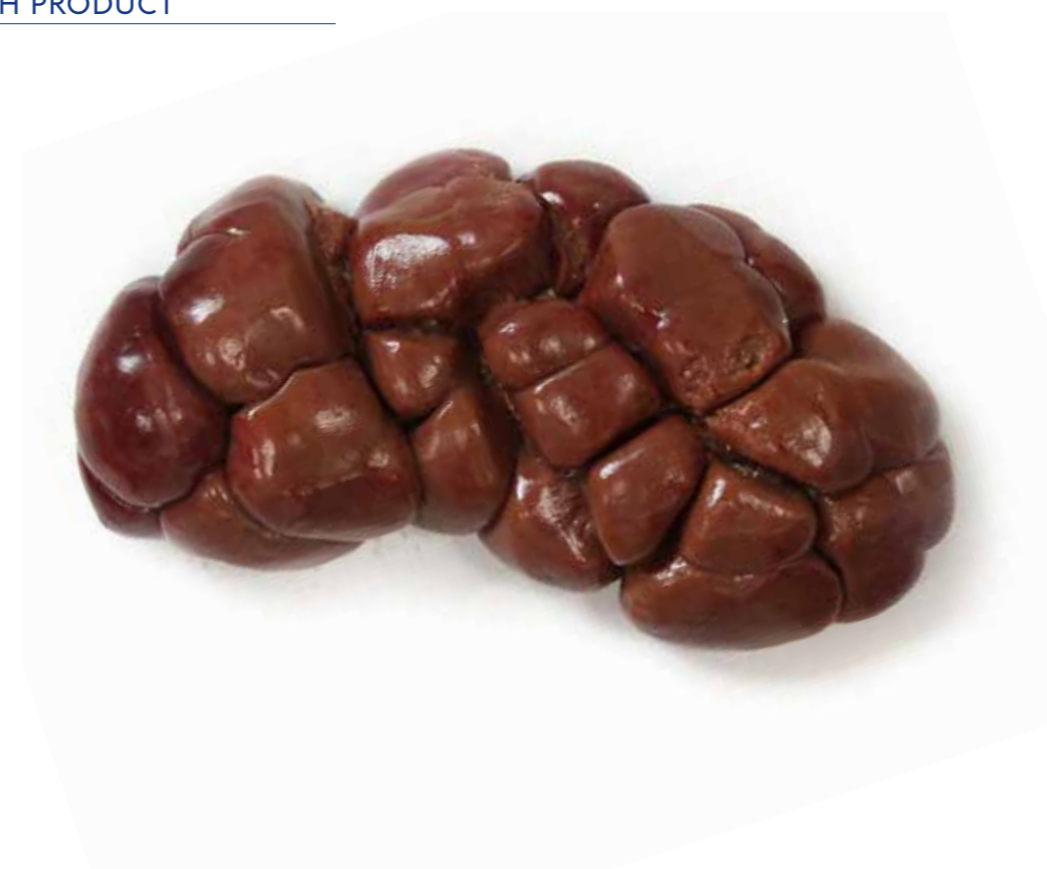


Offal: Beef Kidney



# Beef Kidney

FRESH PRODUCT



BOXED PRODUCT







# Beef Feet (White)

FRESH PRODUCT



BOXED PRODUCT



# Beef Feet (Burnt)

FRESH PRODUCT



BOXED PRODUCT





# Beef Muzzle (White)

FRESH PRODUCT



BOXED PRODUCT



# Beef Muzzle (Burnt)

FRESH PRODUCT



BOXED PRODUCT





# Beef Flank Membrane

FRESH PRODUCT



BOXED PRODUCT



# Beef Striploin Membrane

FRESH PRODUCT



BOXED PRODUCT





# Beef Skirt Membrane

FRESH PRODUCT



BOXED PRODUCT



# Beef Paddywack

FRESH PRODUCT



BOXED PRODUCT





# Beef Rib Paddywack

FRESH PRODUCT



BOXED PRODUCT



# Beef Neck Paddywack

FRESH PRODUCT



BOXED PRODUCT





# Beef Aorta

FRESH PRODUCT



BOXED PRODUCT



# Beef Achilles Tendon

FRESH PRODUCT



BOXED PRODUCT



Offal: Beef Pizzle



# Beef Pizzle

FRESH PRODUCT



BOXED PRODUCT



Offal: Beef Testicle



# Beef Testicle

FRESH PRODUCT



BOXED PRODUCT



Offal: Beef Knee Bone



# Beef Knee Bone

FRESH PRODUCT



BOXED PRODUCT



Offal: Beef Marrow Bone



# Beef Marrow Bone

FRESH PRODUCT



BOXED PRODUCT



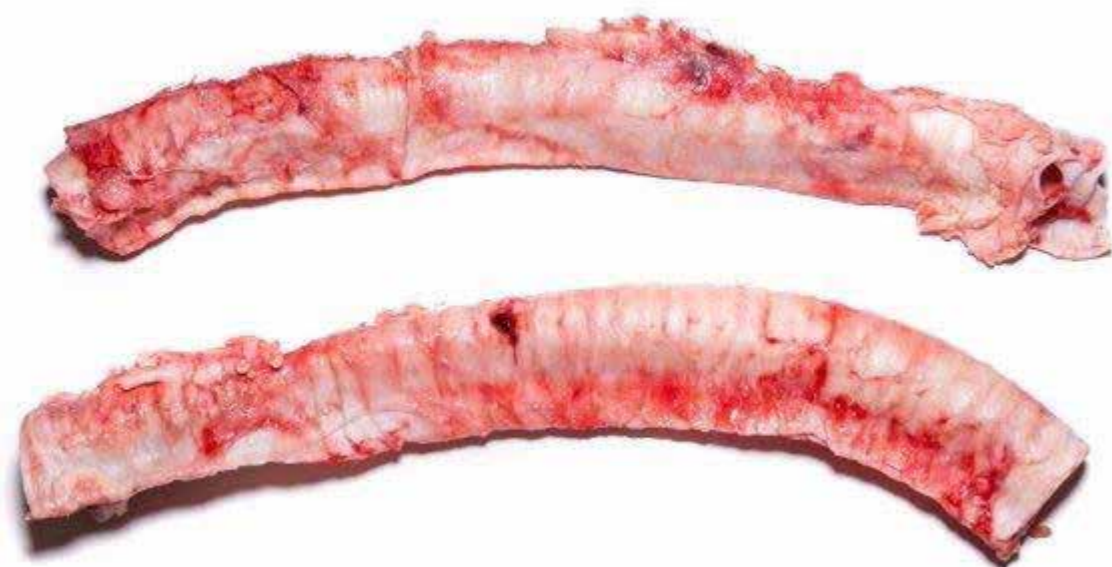
Offal: Beef Trachea



# Beef Trachea

FRESH PRODUCT

---



BOXED PRODUCT

---



Offal: Beef Oesophagus



# Beef Oesophagus

FRESH PRODUCT

---



BOXED PRODUCT

---



Offal: Beef Spleen



# Beef Spleen

FRESH PRODUCT



BOXED PRODUCT



Offal: Beef Cartilage

# Beef Cartilage

FRESH PRODUCT



BOXED PRODUCT





# Beef Tripe Rumen

FRESH PRODUCT



BOXED PRODUCT



# Beef Tripe Honeycomb

FRESH PRODUCT



BOXED PRODUCT





# Beef Omasum

FRESH PRODUCT



BOXED PRODUCT



# Beef Abomasum

FRESH PRODUCT



BOXED PRODUCT





# Beef Tripe Pieces

FRESH PRODUCT



BOXED PRODUCT



# Beef Omasum Pieces

FRESH PRODUCT



BOXED PRODUCT





# Beef Raw Omasum

FRESH PRODUCT



BOXED PRODUCT



# Beef Mountain Chain Tripe

FRESH PRODUCT



BOXED PRODUCT





Foyle  
Food Group



Contact our teams;

Export Team

**+44 (0) 28 8224 3201**

[export@foylefoodgroup.com](mailto:export@foylefoodgroup.com)

Sales Team (UK & Ireland)

**+44 (0) 28 8224 3201**

[sales@foylefoodgroup.com](mailto:sales@foylefoodgroup.com)

Agricultural Team

**+44 (0) 28 8224 3201**

[agricultureinfo@foylefoodgroup.com](mailto:agricultureinfo@foylefoodgroup.com)



[foylefoodgroup.com](http://foylefoodgroup.com)



Visit our site now

1

**Shared Service Centre  
Foyle Omagh**

UK (NI) 9042 EC

52 Doogary Road,  
Omagh, County Tyrone,  
Northern Ireland BT79 0BQ

1

**Foyle Ingredients**

UK (NI) 9042 EC

52 Doogary Road,  
Omagh, County Tyrone,  
Northern Ireland BT79 0BQ

2

**Foyle Campsie**

UK (NI) 9016 EC

Lisahally, Campsie,  
County Londonderry,  
Northern Ireland BT47 6TJ

2

**Foyle Proteins**

UK (NI) 9016 EC

Lisahally, Campsie,  
County Londonderry,  
Northern Ireland BT47 6TJ

2

**Foyle Bio**

UK (NI) 9016 EC

Lisahally, Campsie,  
County Londonderry,  
Northern Ireland BT47 6TJ

3

**Foyle Donegal**

IRL 292 EC

Drumnashear, Carrigans,  
County Donegal,  
Ireland

4

**Foyle Gloucester**

UK 2172 EC

Forest Vale Industrial Estate,  
Cinderford, Gloucestershire,  
England GL14 2PH

5

**Foyle Melton Mowbray**

UK 2077 EC

Melton Road, Sixhills,  
Leicestershire,  
England LE14 3PR