

2023 REPORT BACK TO THE COMMUNITY



124 *people experiencing homelessness were supported to find housing in the community*



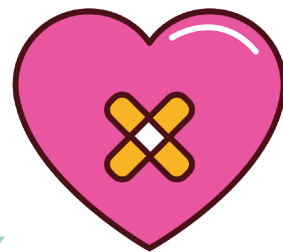
In 2023, there were approximately 270 people experiencing homelessness at any given time in Peterborough. Approximately 40 of these were youth, along with an average of 14 families.

There are only 15 youth beds and 15 family beds in the shelter system (at the YES Shelter for Youth and Families). This means that we are only able to offer overnight safety to less than half of the youth and families in Peterborough who need it.

What we're doing to help:



37 *young people found safe housing and recovery through our RISE Youth Housing Program*



74 *young people avoided homelessness all together thanks to our Prevention Program*



115 *households received a regular food box through our on our Food Cupboard Program*



97 *young people took part in our daily life skills programming in shelter*



143 *community volunteers came and helped keep the shelter running smoothly*

And here's some great news:

Over the last 5 years, youth homelessness in Peterborough has declined by over 50%. This means less young people are suffering through homelessness alone and more youth are avoiding or exiting homelessness with help. **This is the amazing impact your donation is having.**

UPDATES:

Our Shelter Repair Project is underway

We've successfully repaired the major plumbing issue at the front of the shelter, renewed the landscaping, and have just about completed fully renovating the youth and family washrooms in shelter. We've completed side fencing replacement and work to repair the shelter front porch and façade is starting early this summer.

BUT we're still about \$30K away from our goal of \$200K to truly get the shelter up to a state of good repair. **Please spread the word!** Getting us over the finish line could be an amazing way to help youth and families at YES.



Supporting people with the basics through the winter

This past winter, we were supported by the United Way Peterborough & District to meet a greater number of people approaching us for this kind of help. We helped an average of 45 people each day with the basics. This meant giving out 1000s of snacks, juice, water, hand and foot warmers, hoodies, socks, toiletries kits, warm gloves and toques over the winter and spring of 2024.



YES is a Living Wage Employer

These jobs are tough. That's why YES is prioritizing staff wellness and job sustainability. Committing to paying all staff a "living wage" means, thanks to your help, all of our staff are supported to be well in their personal lives with sufficient income, and as an organization we're able to build a strong staff culture, and retain our amazing workers who are committed to helping anyone and everyone they can.



LEARN MORE: WWW.YESSHELTER.CA